



OFFICE OF THE  
PRESIDENT  
(301) 295-3013

**UNIFORMED SERVICES UNIVERSITY OF THE HEALTH SCIENCES**  
4301 JONES BRIDGE ROAD  
BETHESDA, MARYLAND 20814-4712  
<http://www.usuhs.mil>



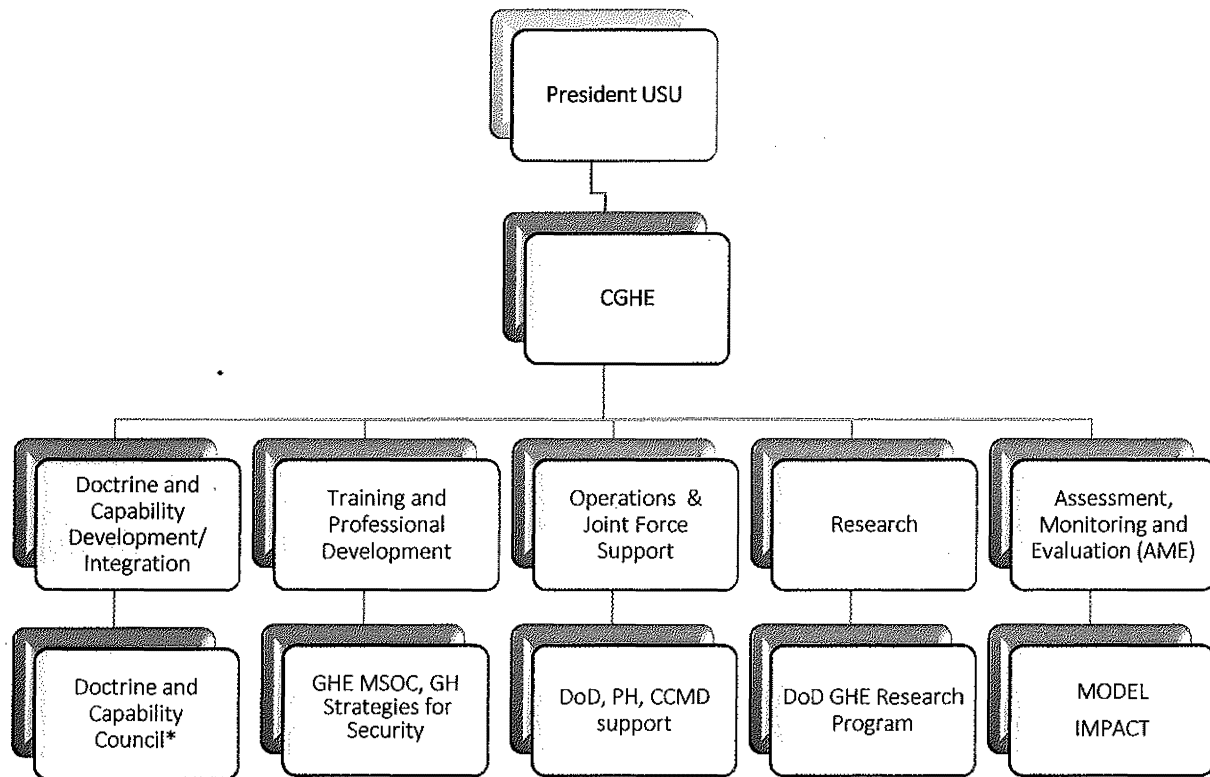
Office of the President  
PPM-005-2017

RECEIVED FEB 10 2017

**SUBJECT: Center for Global Health Engagement Organization**

1. **Purpose:** To define the organization of the Uniformed Services University of the Health Sciences (USU) Center for Global Health Engagement (CGHE).
2. **Applicability:** This policy applies to all the schools, agencies, institutions and centers that comprise the USU.
3. **Policy:** USU will organize the CGHE as described below.
4. **Background:** In December 2015, USU established the CGHE with the mission to integrate, lead and synchronize the University's contributions to DoD Global Health Engagement (GHE) and National Security Objectives by providing a hub for GHE thought leadership and knowledge, strategic communications and outreach, operational support, research, and capability integration of education, training and planning. The CGHE will facilitate accomplishment of the goals laid out in the USU Strategic Framework and will help ensure fulfillment of OASD (HA) desire for USU to have integrated GHE capabilities that support the Joint Force and the Military Health System.
5. **Organization:** In order to fully operationalize CGHE and to implement its mission, the CGHE will be composed of the following organization components as depicted below:
  - a. Doctrine and Global Health Engagement (GHE) Capability Development Division: The Doctrine and GHE Capability Development Division informs and develops GHE-related doctrine and establishes a USU GHE Capability Council.
  - b. Training and Professional Development Division: The Training and Professional Development Division of CGHE educates and trains leaders, health professionals and uniformed services organizations in the health implications of national security and in tactics, techniques and procedures of GHE.
  - c. Operations and Joint Force Support Division: The Operations and Joint Force Support Division provides for programmatic execution and Combatant Command (CCMD) support coordination when needed.
  - d. GHE Research Division: The GHE Research Division develops a multi-year GHE research strategy, manages the GHE research program, and leads the GHE DoD Capabilities-Based Assessment

- e. Assessment, Monitoring and Evaluation Division: The AME Division develops AME capabilities in support of the DoD, Joint Staff, Joint Force and CCMDs by seeking to show value and lessons learned for GHE activities and engagements.



\* The second row represents programs and activities that already exist. The D&C Council will become operational in spring 2016.

## 6. Procedures:

- The CGHE will sustain and enhance relationships with the Schools, particularly in their education and training functions. The center will work closely and collaboratively with the Division of Global Health in the Department of Preventive Medicine and Biostatistics as well as other divisions, offices, and units engaged in public health education and research. The relevant academic units of the University will retain the responsibility of awarding credits in global health, including certificates that may be applied towards the eventual awarding of a graduate degree.
- CGHE will work with the Vice President for Finance and Administration on acquiring the necessary staffing and funding resources to execute the center's mission and to advance the University's role in global health engagement.
- The Chief of Staff, USU, in conjunction with the Director, CGHE, will have oversight of the implementation of the new organization.

- d. During the evolution of the CGHE, the current mission, functions and tasks of CDHAM will migrate into the new CGHE organizational structure.
  - e. As the CGHE moves toward Full Operational Capability (FOC), USU will seek the ASD (HA) approval of an official charter for the CGHE which will formalize the relationship between the newly established CGHE at USU and the Office of the Assistant Secretary of Defense for Health Affairs. This charter will ensure that the CGHE transcends changes in leadership within the national security community and will anchor the CGHE in the bedrock of the MHS and the Joint Force.
7. **Release:** This policy is approved for release to all personnel and organizations with involvement or interest in Global Health Engagement.
8. **Effective Date:** This PPM is effective upon date of signature.



Richard W. Thomas, MD, DDS, FACS  
Major General, U.S. Army (Retired)  
President

Enclosure:

1. References

**References:**

1. President of the United States, National Security Strategy 2015
2. Presidential Policy Directive - 6 U.S. Global Development Policy
3. Title 10, United States Code
4. National Defense Authorization Act 2013, Section 715
5. DoD Appropriations Bill 2015
6. NSPD-44. Management of Interagency Efforts Concerning Reconstruction and Stabilization
7. DoD Instruction 3000.05, Military Support for Stability, Security, Transition, and Reconstruction (SSTR) Operations
8. DoDI 5105.45 Uniformed Services University of the Health Sciences (USUHS)
9. DoDI 6000.16 Military Health Support for Stability Operations
10. OSD Policy Guidance for Global Health Engagement DTG 152052Z May 13
11. Joint Concept for Health Services June 2015
12. ASD(HA) Strategic Pillars 2014
13. USU Strategic Framework 2014-2018
14. DoD Global Health Work Group Final Committee Reports June 2015
15. President, USU e-mail to USU-ALL@usuhs.edu, Tue, Dec 1, 2015, 10:23, Subject: Establishment of USU Center for Global Health Engagement